

EVA

LIGHTING FIXTURE

KEMA 01ATEX2249

zone 1

zone 2

EEx d IIC

II2GD

IP 66

-20°C

zone 21

zone 22



+40°C

special T amb.

-45°C

special T amb.

+80°C

EN 50014

T5

T4

T3

EN 50281-1-1

T 95°C

T 130°C

T 195°C



Caratteristiche : Apparecchi di illuminazione

Features : Lighting fixtures

Materiali : Lega leggera e vetro borosilicato

Materials : Light alloy and borosilicate glass

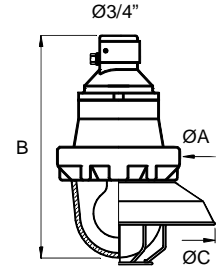
A richiesta Lampada (L), gabbia (P) e riflettore (D)

Optional Lamp (L), guard (P) and reflector (D)

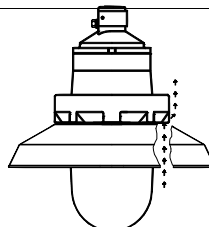
Codice Code	Max. Potenza Max Power	ØA	B	ØC	Codice riflettore Reflector code	Codice gabbia Guard code
EVA 50	100 W	128	222	218	EV 50/8	EV 57
EVA 80	150 W	146	264	260	EV 80/8	EV 87
EVA 125	200 W	174	294	300	EV 125/8	EV 127
EVA 250	300 W	196	375	336	EV 250/8	EV 257

Tensione : 230V (standard)
Voltage 12÷240V (optional)

Frequenza : 50Hz (standard)
Frequency 60Hz (optional)



Incandescenza Incandescent	Grandezza Size	Attacco Caps	Temperatura ambiente di esercizio max +40°C Ambient temperature in service max +40°C			
			Classe di temperatura Temperature class	Classe di temperatura Temperature class	Classe di temperatura Temperature class	
	75W	EVA 50	E27	T5	T4	T4
	100W	EVA 50	E27	T4	T4	T3
	150W	EVA 80	E27	T4	T4	T3
	200W	EVA 125	E27	T4	T3	T3
	300W	EVA 250	E40	T3	T3	T3
Fluorescente con vetro Fluorescent with glass						
	13W	EVA 125	E27	T5	T4	-
	17W	EVA 125	E27	T5	T4	-
	21W	EVA 125	E27	T5	T4	-
Fluorescente Fluorescent						
	15W	EVA 50	E27	T5	T4	-
	5 ÷ 23W	EVA 80	E27	T5	T4	-
	23W	EVA 125	E27	T5	T4	-
Incandescent-Xeno Halogen-Multiled						
	<75W	EVA 50 - 80 - 125 - EVA 250		T5	T4	-



L' applicazione del riflettore non ostacola la dispersione di calore per convezione, per effetto di feritoie tra riflettore e globo di vetro.
The installation of reflector doesn't stop convection heat dissipation by loop-holes between reflector and glass globe.

EVA

LIGHTING FIXTURE

KEMA 01ATEX2249

zone 1

zone 2

EEx d IIC

IIGD

IP 66

-20°C

zone 21

zone 22



+40°C

EN 50014

special T amb.

T5

T4

T3

-45°C

EN 50281-1-1

special T amb.

T 95°C

T 130°C

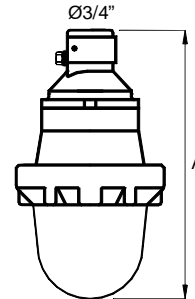
T 195°C

+80°C

**INSTALLAZIONE A SOSPENSIONE
SUSPENDED MOUNTING**



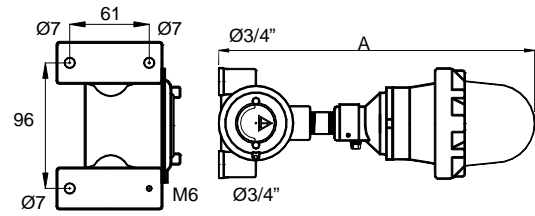
Codice Code	A
EVA 50	222
EVA 80	264
EVA 125	294
EVA 250	375



**INSTALLAZIONE A SOFFITTO
CEILING MOUNTING**



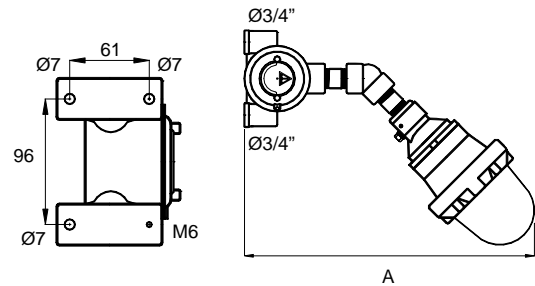
EVCT 50	362
EVCT 80	404
EVCT 125	434
EVCT 250	515



**INSTALLAZIONE A PARETE
WALL MOUNTING**



EVJT 50	380
EVJT 80	430
EVJT 125	440
EVJT 250	510



Accessori - Accessories	Suffisso - Suffix	Nota - Note
Riflettore / Reflector	D	Alluminio anodizzato / Anodized aluminium
Lampada / Lamp	L	Indicare potenza e tensione / Add power and voltage
Gabbia / Steel Guard	P	Acciaio zincato / Galvanized steel
Gabbia / Stainless steel Guard	PY	Acciaio inox / Stainless steel

EVP 50

LIGHTING FIXTURE

KEMA 01ATEX2249

zone 1

zone 2

EEx d IIC

IIGD

IP 66

-20°C

zone 21

zone 22



+40°C

EN 50014

special T amb.

T5

T4

T3

-45°C

EN 50281-1-1

special T amb.

T 95°C

T 130°C

T 195°C

+80°C

Caratteristiche : Apparecchi di illuminazione portatile

Features : Portable lighting fixtures

Materiali : Lega leggera e vetro borosilicato

Materials : Light alloy and borosilicate glass

A richiesta Lampada (L) e riflettore (D)

Optional Lamp (L) and reflector (D)

