

## L XL 40 W/640

---

XL-Type T12 | Tubular fluorescent lamps 38 mm, long life, for explosion-proof luminaires



- Industry
- Places with a heightened risk of fire or explosions
- Oil rigs

### Product benefits

---

- Extreme safety, perfect for explosion-proof fixtures

### Product features

---

- Fa6 base for explosion-proof fixtures



## Technical data

---

### Electrical data

Nominal wattage	40 W
Rated lamp efficacy (HF data)	Under clarification by authority and standardization body
Rated wattage	40 W

### Light technical data

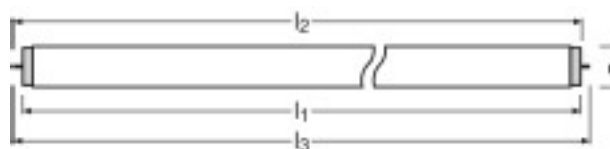
Color rendering index Ra	>=60
Rated luminous flux	2300 lm
Luminous flux at 25 °C	2300 lm
Light color	640
Color temperature	4100 K
Nominal luminous flux	2300 lm
Light color as per EN 12464-1	Cool White
Rated LLMF at 2,000 h	0.88
Rated LLMF at 4,000 h	0.84
Rated LLMF at 6,000 h	0.82

### Dimensions & weight

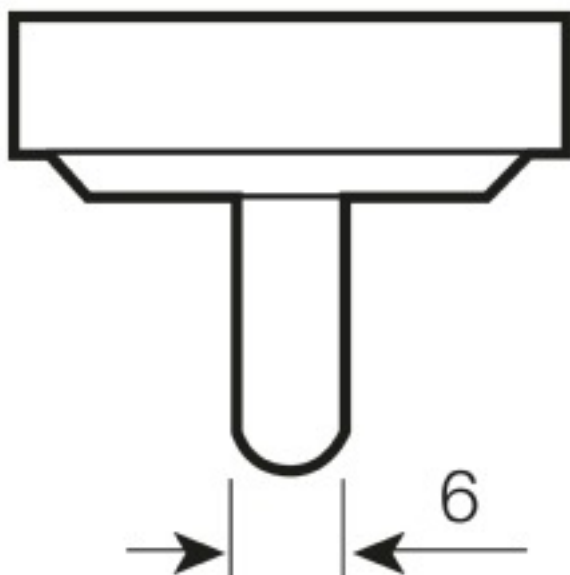
Tube diameter	38 mm
Length	1200.0 mm
Length with base excl. base pins/connection	1184.00 mm
Diameter	38.0 mm



*Product line drawing with letters*



*Product line drawing - technical*



*Base*

**Colors & materials**

Lamp mercury content	3.0 mg
----------------------	--------

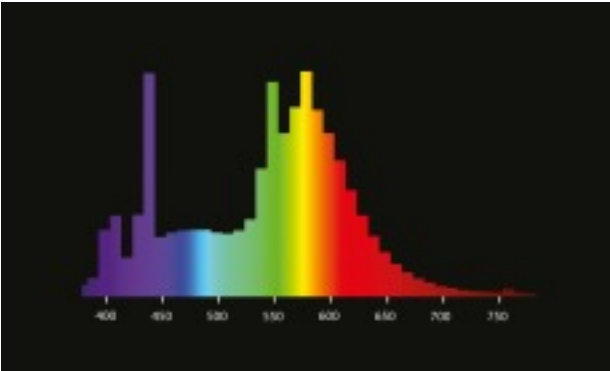
**Lifespan**

Service life	4000 h
Lifespan	10000 h <sup>1)</sup>
Rated lamp survival factor at 2,000 h	1.00
Rated lamp survival factor at 4,000 h	1.00
Rated lamp survival factor at 6,000 h	1.00
Rated lamp survival factor at 8,000 h	1.00
Rated lamp survival factor at 12,000 h	1.00
Rated lamp survival factor at 16,000 h	0.99
Rated lamp survival factor at 20,000 h	0.93

<sup>1)</sup> With CCG/LLCG

**Additional product data**

Base (standard designation)	Fa6
Appropriate disposal acc. to WEEE	Yes
Footnote used only for product	For long-life explosion-proof luminaires in type of protection "increased safety"



*Spectral power distribution*

Capabilities

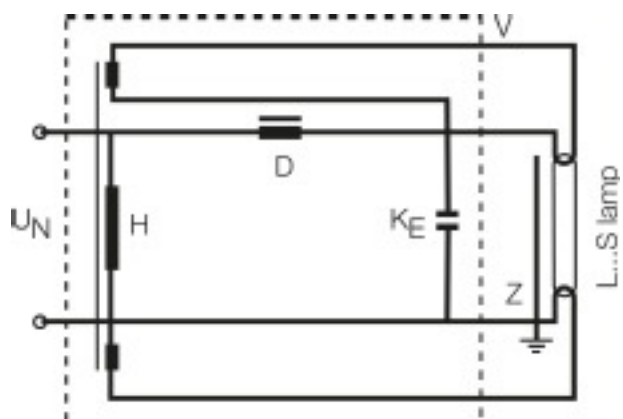
Suitable for indoor	Yes
---------------------	-----

Certificates & standards

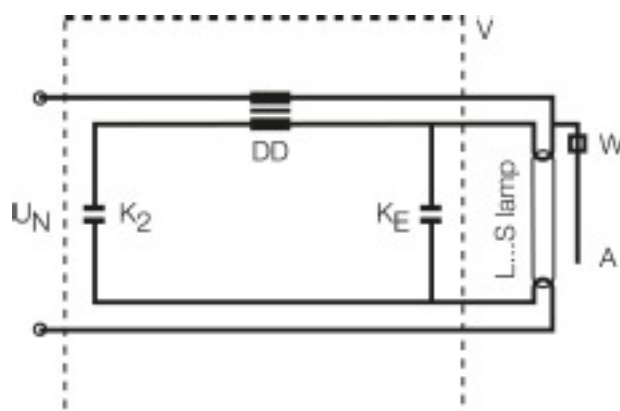
EEI – Energy Label	B
--------------------	---

## Safety advice

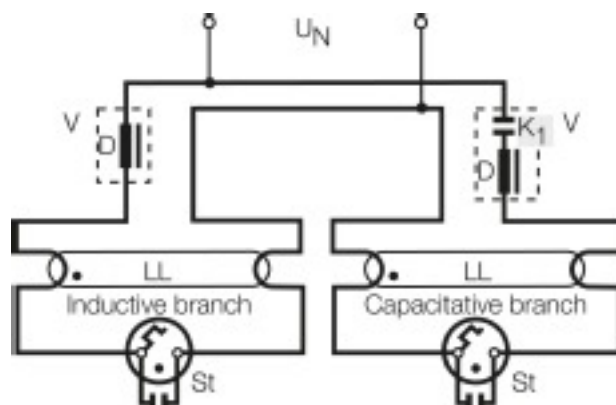
In case of lamp breakage: [www.osram.com/brokenlamp](http://www.osram.com/brokenlamp)



Circuit diagram



Circuit diagram



*Circuit diagram*

## Logistical Data

Product code	Packaging unit (Pieces/Unit)	Dimensions (height x width x length)	Gross weight	Volume
4050300014654	Sleeves 1	43 mm x 42 mm x 1221 mm	292.00 g	2.21 dm <sup>3</sup>
4050300207681	Shipping carton box 25	240 mm x 220 mm x 1260 mm	7754.00 g	66.53 dm <sup>3</sup>



## Disclaimer

---

Subject to change without notice. Errors and omission excepted. Always make sure to use the most recent release.