

Stopper Plugs, Adaptors, Reducers, Breather/Drain Plugs



747, 757 & 767 STOPPER PLUGS

TECHNICAL DATA

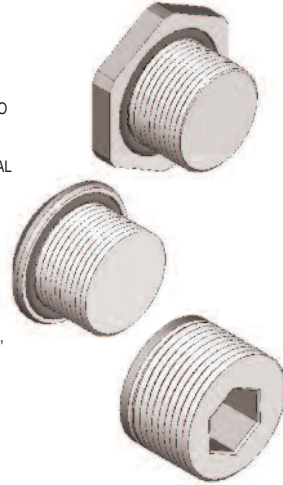
COMPONENT APPROVED STOPPER PLUGS DESIGNED TO CLOSE UNUSED CABLE ENTRY HOLES IN EXPLOSION PROTECTED EQUIPMENT. VERSIONS AVAILABLE WITH & WITHOUT INTEGRAL 'O' RING SEAL, AND FOR INDUSTRIAL OR SAFE AREA USE.

APPROVAL DETAIL

ATEX APPROVAL : SIRA 01ATEX1284U
 IECEx APPROVAL : SIRA IEC Ex SIR07.0056X
 COMPLIANCE : EN / IEC 60079-0, EN / IEC 60079-1, EN / IEC 60079-7, EN 50281 / IEC 61241-0 & IEC 61241-1
 HAZARDOUS AREA CODE OF PROTECTION :
 (Ex) II 2 GD Ex d IIC / Ex e II COMPONENT ZONE 1, ZONE 2, ZONE 21, & ZONE 22 - GAS GROUPS IIA, IIB, IIC, Ex tD
 IEC Ex : Ex d I / Ex e I / Ex d IIC / Ex e II / Ex tD A21 IP6X

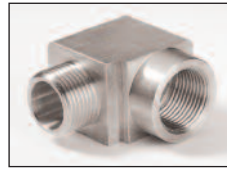
ADDITIONAL APPROVALS HELD

ABS, DNV & LLOYDS



Thread Size	Ordering Reference		
	747 Recessed (Type A *)	757 Hex head	767 Round Head
M16	747DAM15	757DM15	767DM15
M20	747DAM25	757DM25	767DM25
M25	747DAM35	757DM31	767DM35
M32	747DAM45	757DM45	767DM45
M40	747DAM55	757DM55	767DM55
M50	747DAM65	757DM65	767DM65
M63	747DAM75	757DM75	767DM75
M75	747DAM85	757DM85	767DM85

Note*: Type A non tamper proof stopper plugs are externally secured by allen key



787 RIGHT ANGLED ADAPTOR

TECHNICAL DATA

COMPONENT APPROVED RIGHT ANGLED ADAPTOR DESIGNED TO PROTECT CABLES WHEN INSTALLED IN CONFINED SPACES WHERE THE CABLE MAY OTHERWISE BE SUBJECT TO EXCESSIVE BENDING STRESS, AND OFFERS A MEANS OF CONNECTION WHERE THE CABLE CANNOT BE INSTALLED IN THE USUAL PERPENDICULAR FASHION. VERSIONS AVAILABLE WITH HAZARDOUS AREA CERTIFICATION AND ALSO FOR INDUSTRIAL OR SAFE AREA USE.

APPROVAL DETAIL

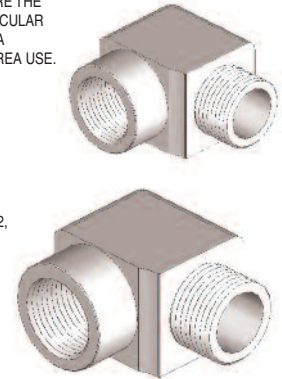
ATEX APPROVAL : SIRA 01ATEX1284U
 IECEx APPROVAL : IEC Ex SIR07.0055U
 COMPLIANCE : EN / IEC 60079-0, EN / IEC 60079-1, EN / IEC 60079-7, EN 50281 / IEC 61241-0 & IEC 61241-1

HAZARDOUS AREA CODE OF PROTECTION :

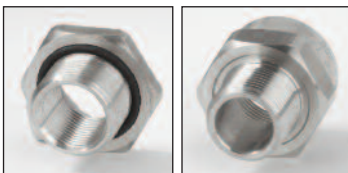
(Ex) II 2 GD Ex d IIC / Ex e II COMPONENT ZONE 1, ZONE 2, ZONE 21, & ZONE 22 - GAS GROUPS IIA, IIB, IIC, Ex tD
 IEC Ex : Ex d I / Ex e I / Ex d IIC / Ex e II / Ex tD A21 IP6X

ADDITIONAL APPROVALS HELD

ABS, DNV & LLOYDS



Thread Size	Ordering Reference
M20 x M20	787DM2M25
M25 x M25	787DM3M35
M32 x M32	787DM4M45
M40 x M40	787DM5M55
1/2" NPT x M20	787DT1M25
3/4" NPT x M25	787DT2M35
1/2" NPT x 1/2" NPT	787DT1T15
3/4" NPT x 3/4" NPT	787DT2T25



737 ADAPTORS AND REDUCERS

TECHNICAL DATA

COMPONENT APPROVED ADAPTORS & REDUCERS DESIGNED TO CONVERT THREAD FORMS AND SIZES BETWEEN EXPLOSION PROTECTED EQUIPMENT AND CABLE ENTRY DEVICES. VERSIONS AVAILABLE WITH & WITHOUT INTEGRAL 'O' RING SEAL, AND ALSO FOR INDUSTRIAL OR SAFE AREA USE.

APPROVAL DETAIL

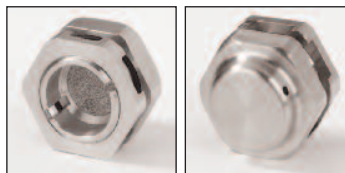
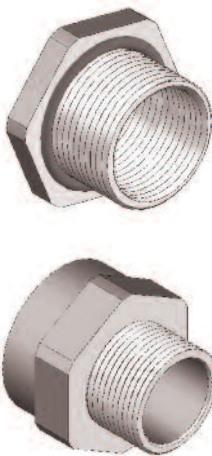
ATEX APPROVAL : SIRA 01ATEX1284U
 IECEx APPROVAL : IEC Ex SIR07.0052X
 COMPLIANCE : EN / IEC 60079-0, EN / IEC 60079-1, EN / IEC 60079-7, EN 50281 / IEC 61241-0 & IEC 61241-1
 HAZARDOUS AREA CODE OF PROTECTION :
 (Ex) II 2 GD Ex d IIC / Ex e II COMPONENT ZONE 1, ZONE 2, ZONE 21, & ZONE 22 - GAS GROUPS IIA, IIB, IIC, Ex tD
 IEC Ex : Ex d I / Ex e I / Ex d IIC / Ex e II / Ex tD A21 IP6X

ADDITIONAL APPROVALS HELD

ABS, DNV & LLOYDS

Virtually any thread conversion imaginable can be supplied.

Please see page 13 for common sizes and how to order.



781D & 781E BREATHER DRAIN PLUG

TECHNICAL DATA

COMPONENT APPROVED BREATHER DRAIN PLUG FOR USE WITH FLAMEPROOF Ex d OR INCREASED SAFETY Ex e ENCLOSURES THAT ARE SUSCEPTIBLE TO CONDENSATION OR PRONE TO MOISTURE COLLECTION OR INGRESS DURING NORMAL OPERATION.

VERSIONS AVAILABLE IN BRASS, ALUMINIUM, STAINLESS STEEL, OR NON-METALLIC.

APPROVAL DETAIL

ATEX APPROVAL : SIRA 10ATEX1307U
 IECEx APPROVAL : IEC Ex SIR 10.0149U
 COMPLIANCE : EN / IEC 60079-0, EN / IEC 60079-1, EN / IEC 60079-7, EN / IEC 60079-31

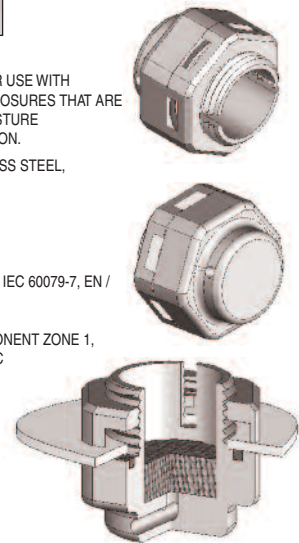
HAZARDOUS AREA CODE OF PROTECTION :

(Ex) II 2 GD Ex d IIC Gb or Ex e IIC / Ex ta IIIC Da, COMPONENT ZONE 1, ZONE 2, ZONE 21, & ZONE 22 - GAS GROUPS IIA, IIB, IIC
 IEC Ex : Ex d IIC Gb & Ex ta IIIC Da (Type 781D)
 Ex e IIC Gb & Ex ta IIIC Da (Type 781E)

INGRESS PROTECTION : IP66

ADDITIONAL APPROVALS HELD

ABS, DNV & LLOYDS



Size	Ordering Reference			
	Flameproof Type d		Increased Safety Type e	
	Nickel Plated Brass	Stainless Steel	Nickel Plated Brass	Stainless Steel
M20	781DM25	781DM24	781EM25	781EM24
M25	781DM35	781DM34	781EM35	781EM34

Note : These products comply with the corresponding AS/NZS 60079 standards which are identical to the IEC 60079 compliance standards detailed above.